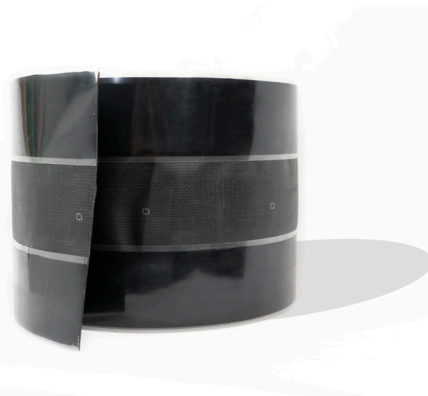


Features and Components

Use: To secure EPDM membrane from underneath in perimeters and corners and as additional securement as specified in Johns Manville specifications and details.

Materials: 10" (25.4 cm) wide, 45 mil (1.14 mm) thick, polyester scrim reinforced, cured EPDM strip with a factory-laminated, 3" (7.62 cm) self-adhering seam tape on each side.

Color: Black



Component

A
Accessory

Single Ply

Type

PR
Perimeter Reinforcement

System Compatibility This product may be used as a component in the following systems. Please reference product application for specific installation methods and information.

Multi-Ply	BUR		APP		SBS				
	HA	CA	HW	HA	CA	HW	SA	MF	
<i>Do not use in multi-ply systems</i>									

Single Ply	TPO				PVC			EPDM		
	MF	AD	SA	IW	MF	AD	IW	MF	AD	BA
<i>Compatible with the selected single ply systems above</i>										

Key: HA = Hot Applied CA = Cold Applied HW = Heat Weldable SA = Self Adhered MF = Mechanically Fastened IW = Induction Weld BA = Ballasted AD = Adhered

Peak Advantage® Guarantee Information

Systems
Approved for use in any JM Peak Advantage Guarantee System

Installation/Application



Self-Adhered



Mechanically Fastened

- This product must be both self-adhered and mechanically fastened to properly function.
- Prime EPDM membrane with JM EPDM Single Ply Primer or JM Single Ply Primer (Low VOC) before applying to JM EPDM Reinforced Perimeter Strip (RPS) with Tape.
- Do not install in direct contact with asphalt or coal tar pitch.
- Refer to JM EPDM applicator guides or detail drawings for instructions.

Packaging and Dimensions

Roll Size	10" x 100' (25.4 cm x 30.48 m)
Thickness:	
Membrane	0.045" (1.14 mm)
Tape	0.030" (0.76 mm)
Total	0.075" (1.90 mm)
Roll Coverage	83.3 ft ² (7.7 m ²)
Rolls per Box	1
Linear Units per Box	100 lin ft (30.48 lin m)
Weight per Box	40 lb (18 kg)
Boxes per Pallet	36
Weight per Pallet	1440 lb (65.3 kg)

Storage

Shelf Life	18 months from manufacture date
Storage Conditions	Store indoors, out of direct sunlight, and keep clean and dry prior to application.
Temperature Range	60°F – 80°F (16°C – 27°C)

Technical specifications as shown in this literature are intended to be used as general guidelines only. Please refer to the Safety Data Sheet and product label prior to using this product. The Safety Data Sheet is available by calling (800) 922-5922 or on the web at www.jm.com/roofing. The physical and chemical properties of the product listed herein represent typical, average values obtained in accordance with accepted test methods and are subject to normal manufacturing variations. They are supplied as a technical service and are subject to change without notice. Check with the regional sales representative nearest you for current information.

All Johns Manville products are sold subject to Johns Manville's standard Terms and Conditions, which includes a Limited Warranty and Limitation of Remedy. For a copy of the Johns Manville standard Terms and Conditions or for information on other Johns Manville roofing products and systems, visit www.jm.com/terms-conditions.